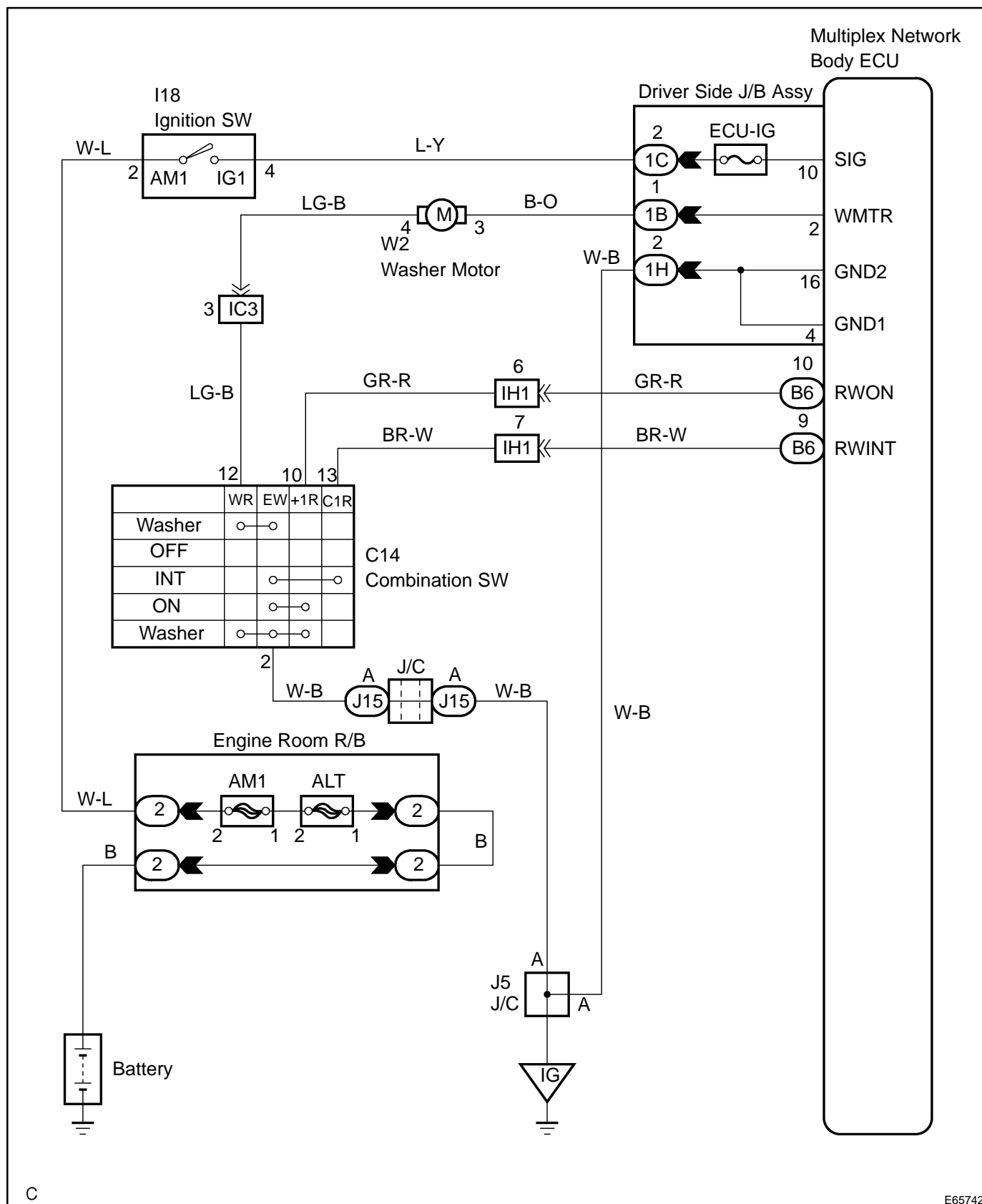


COMBINATION SWITCH POWER SOURCE CIRCUIT

CIRCUIT DESCRIPTION

- This circuit provides power to operate the combination switch.
- Perform this inspection with the back door window glass fully closed.

WIRING DIAGRAM

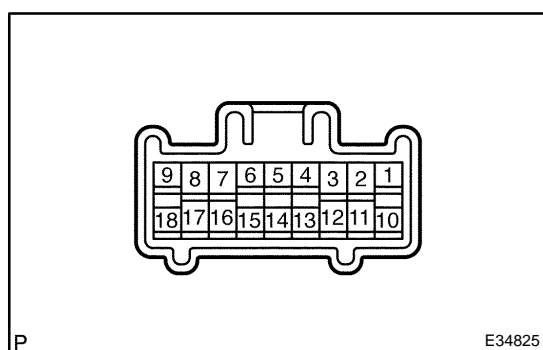


INSPECTION PROCEDURE

1 CHECK VEHICLE CONDITION

- (a) Check the condition A, B or C, when rear wiper or rear washer system does not operate.

A	Rear wiper and washer system does not operate.
B	Rear wiper system does not operate.
C	Rear washer system does not operate.

B ➤ **Go to step 4****C** ➤ **Go to step 6****A****2 INSPECT WINDSHIELD WIPER SWITCH ASSY**

- (a) Check the continuity the windshield wiper switch assy.

Rear Wiper Switch

Switch position	Tester connection	Specified condition
OFF	-	No Continuity
INTO	2 (EW) - 13 (C1R)	Continuity
ON	2 (EW) - 10 (+1R)	Continuity

Rear Washer Switch

Switch position	Tester connection	Specified condition
OFF	-	No continuity
ON (OFF position side)	2 (EW) - 12 (WR)	Continuity
ON (ON position side)	2 (EW) - 10 (+1R) - 12 (WR)	Continuity

- (b) Check the continuity the terminals 2 (EW) of windshield wiper switch assy and body ground.

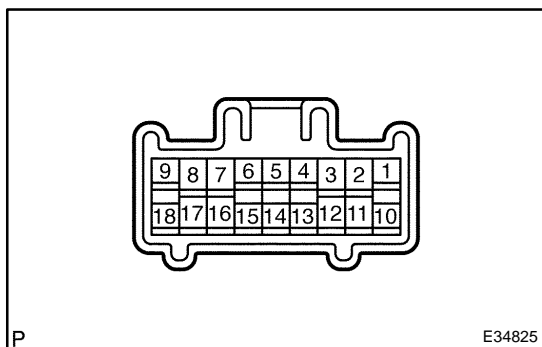
Standard: There is continuity**NG** ➤ **REPLACE WINDSHIELD WIPER SWITCH ASSY****OK****3 INSPECT DRIVE SIDE JUNCTION BLOCK(SIG)**

- (a) Measure the voltage between terminals 1C-2 and 1H-2 of driver side junction block when ignition key is ON.

Standard:

Switch position	Tester connection	Specified condition
OFF	1C-2 (SIG) - 1H-2 (GND)	Below 1 V
ON	1C-2 (SIG) - 1H-2 (GND)	10 - 14 V

NG ➤ **REPAIR OR REPLACE HARNESS OR CONNECTOR****OK****REPAIR OR REPLACE POWER WINDOW REGULATOR MOTOR ASSY LH**

4 INSPECT WINDSHIELD WIPER SWITCH ASSY

- (a) Check the continuity the windshield wiper switch assy.
Rear Wiper Switch

Switch position	Tester connection	Specified condition
OFF	-	No Continuity
INTO	2 (EW) - 13 (C1R)	Continuity
ON	2 (EW) - 10 (+1R)	Continuity

NG**REPLACE WINDSHIELD WIPER SWITCH ASSY****OK****5 CHECK MULTIPLEX NETWORK BODY ECU**

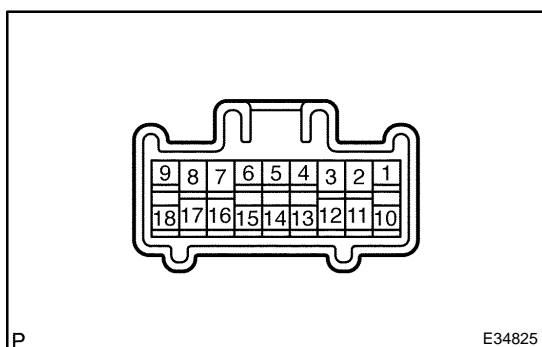
- (a) Check the continuity terminals multiplex network body ECU and body ground, when rear wiper switch operated.

Standard:

Switch position	Tester connection	Specified condition
INT	B6-9 (RWINT) - Body ground	No continuity → Continuity
ON	B6-10 (RDON) - Body ground	No continuity → Continuity

NG**REPAIR OR REPLACE HARNESS OR CONNECTOR****OK**

PROCEED TO NEXT CIRCUIT INSPECTION SHOWN ON PROBLEM SYMPTOMS TABLE
(See page [05-868](#))

6 INSPECT WINDSHIELD WIPER SWITCH ASSY

- (a) Check the continuity the windshield wiper switch assy.
Rear Washer Switch

Switch position	Tester connection	Specified condition
OFF	-	No continuity
ON (OFF position side)	2 (EW) - 12 (WR)	Continuity
ON (ON position side)	2 (EW) - 10 (+1R) - 12 (WR)	Continuity

NG**REPLACE WINDSHIELD WIPER SWITCH ASSY****OK**

7 INSPECT DRIVE SIDE JUNCTION BLOCK

- (a) Check the continuity terminals driver side junction block and body ground, when rear washer switch operated.

Standard:

Switch position	Tester connection	Specified condition
ON (OFF position side)	1B-1 (WMTR) - Body ground	No continuity → Continuity
ON (ON position side)	1B-1 (WMTR) - Body ground	No continuity → Continuity

OK**REPLACE RR WASHER MOTOR & PUMP ASSY****NG**

PROCEED TO NEXT CIRCUIT INSPECTION SHOWN ON PROBLEM SYMPTOMS TABLE
(See page [05-868](#))